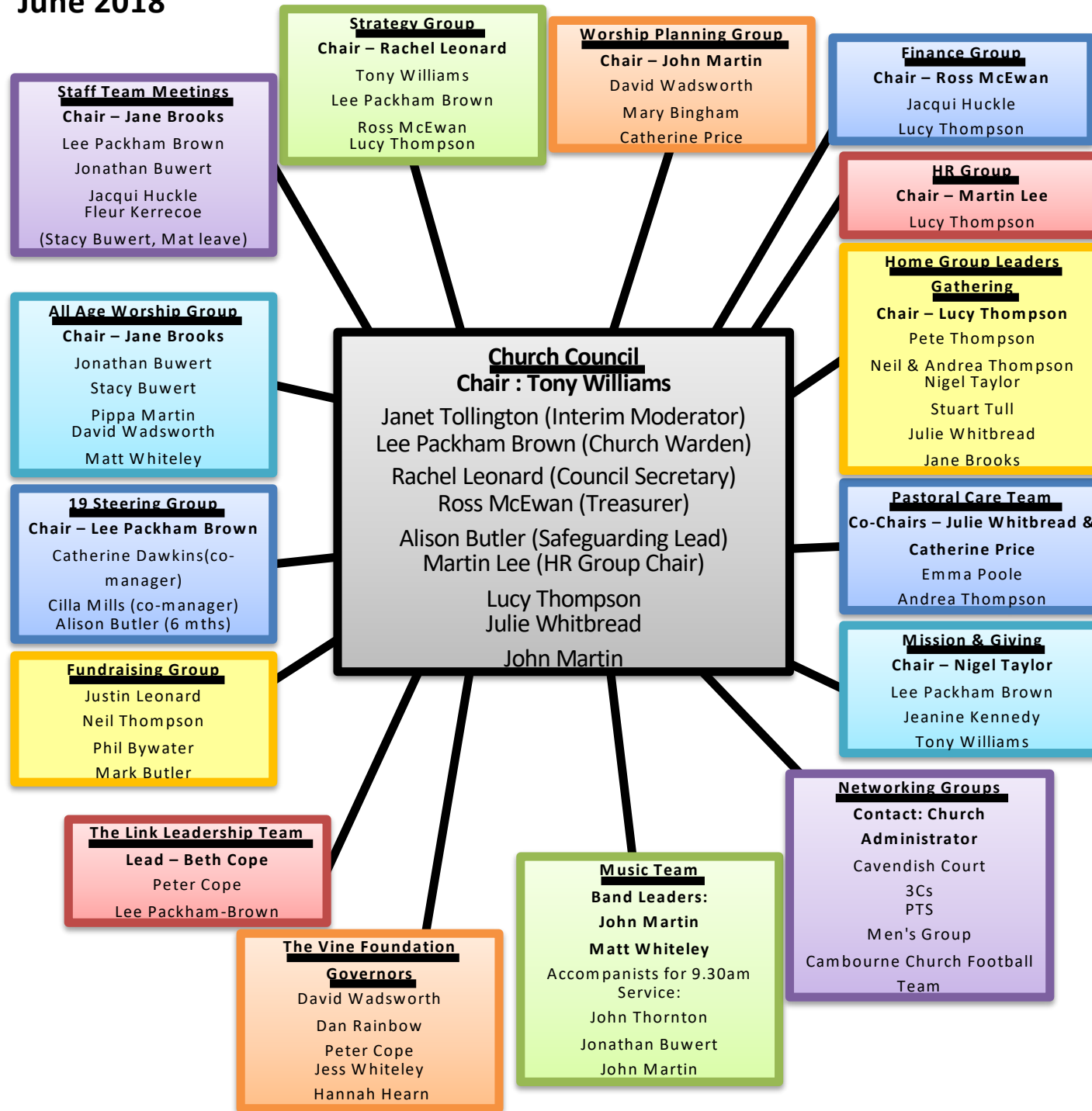


# Cambourne Church Structures Overview

June 2018



## Church Council

Chair: Tony Williams  
[churchcouncil@cambournechurch.org.uk](mailto:churchcouncil@cambournechurch.org.uk)  
Secretary: Rachel Leonard

[Council.secretary@cambournechurch.org.uk](mailto:Council.secretary@cambournechurch.org.uk)

## Strategy Group

Chair: Rachel Leonard  
[strategygroup@cambournechurch.org.uk](mailto:strategygroup@cambournechurch.org.uk)

## Staff Team Meetings

Chair: Jane Brooks  
[staffteammeetings@cambournechurch.org.uk](mailto:staffteammeetings@cambournechurch.org.uk)  
Staff Line-Management contact Lucy Thompson  
[lucy.thompson@cambournechurch.org.uk](mailto:lucy.thompson@cambournechurch.org.uk)

## Worship Planning Group (WPG)

Chair: John Martin  
[worshipplanninggroup@cambournechurch.org.uk](mailto:worshipplanninggroup@cambournechurch.org.uk)  
contact Mary Bingham re: Sunday programme  
[SundayProgramme@cambournechurch.org.uk](mailto:SundayProgramme@cambournechurch.org.uk)

## All Age Worship Group (AAWG)

Chair: Jane Brooks  
[allageworshipgroup@cambournechurch.org.uk](mailto:allageworshipgroup@cambournechurch.org.uk)

## HR Team

Chair: Martin Lee  
[hrteam@cambournechurch.org.uk](mailto:hrteam@cambournechurch.org.uk)

## Fundraising Group

[fundraisinggroup@cambournechurch.org.uk](mailto:fundraisinggroup@cambournechurch.org.uk)

## 19 Steering Group

Chair: Lee Packham-Brown  
[19steeringgroup@cambournechurch.org.uk](mailto:19steeringgroup@cambournechurch.org.uk)

## Pastoral Care Team (PCT)

Chair: Julie Whitbread and Catherine Price  
[pastoralcareteam@cambournechurch.org.uk](mailto:pastoralcareteam@cambournechurch.org.uk)

## The Link Leadership

Lead: Beth Cope  
[thelinkleadershipteam@cambournechurch.org.uk](mailto:thelinkleadershipteam@cambournechurch.org.uk)

## Home Group Leaders Gathering

Chair: Lucy Thompson  
[homegroupleadersgathering@cambournechurch.org.uk](mailto:homegroupleadersgathering@cambournechurch.org.uk)

## Music Group

Leaders: John Martin and Matt Whiteley  
[musicgroup@cambournechurch.org.uk](mailto:musicgroup@cambournechurch.org.uk)

## Mission & Giving

Chair: Nigel Taylor  
[missionandgiving@cambournechurch.org.uk](mailto:missionandgiving@cambournechurch.org.uk)

## Networking Groups & Vine Foundation Governors

Contact: Church Administrator  
[administrator@cambournechurch.org.uk](mailto:administrator@cambournechurch.org.uk)  
[thevinefoundationgovernors@cambournechurch.org.uk](mailto:thevinefoundationgovernors@cambournechurch.org.uk)

## Safeguarding Lead

Alison Butler . 07871 096265  
[Alison.butler@cambournechurch.org.uk](mailto:Alison.butler@cambournechurch.org.uk)