



# Cambourne Church

## Notes and News

18<sup>th</sup> January 2026

### Sunday Services

We are the parish church for Cambourne and part of the Church of England, the Methodist Church, the United Reformed Church and the Baptist Union.

# WELCOME

We're delighted to welcome you to join us for our service as we worship the Lord together.

If you're new or visiting, please introduce yourself to us, we'd love to welcome you to our church.

**9.30am:** Morning Worship with Communion

**11.00am:** Morning Worship with Communion, and with groups for children and young people

This morning's reading is Matthew 5:13-16.  
Rev Bill Miller will be sharing his reflections on the theme of 'Salt and Light: Christian Witness in the World' as part of our series on 'The Sermon on the Mount'.



*Services next week*

**Sunday 25th January**

9.30am: Morning Worship

11.00am: Morning Worship with groups for children and young people



*An induction loop  
is available during  
the services in the  
hall*

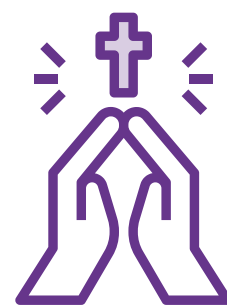
## Prayers

For those in our community who are unwell and those supporting them

For those who have been affected by the violent protests in Iran and the ongoing tension

Prayers from our Prayer Diary

- The Methodist Church (East Anglia District and Cambridge Circuit) and Ian Cameron, the Cambourne Church denominational rep
- 19 The Coffee House, Foodbank
- Cambourne police station & local police officers
- Cambourne fire station & local firefighters



Prayer for the week

God of hope and courage, you call each of us to bear witness to your abundant love in a frightened world. All around us are signs the world is struggling and the future is unclear. Strengthen our confidence in your unfailing grace and grant us the courage to move onward even when we cannot see the way, knowing that you will guide our every step. Amen

<https://resistharm.com/prayers/prayer-of-witness/>

Uzimatele update

We encourage you to visit the Mission and Giving area of the church website

([www.cambournechurch.org.uk/missionpartners](http://www.cambournechurch.org.uk/missionpartners)) where you will find a new update from Uzimatele.

Refreshments for 3Cs

Do you have a half hour free any time between 2 and 3.15pm on two Mondays a month? It would help our Seniors' Board Games afternoon to be hospitable if we could have tea/coffee/biscuits brought through from the kitchen to our play tables in the Foyer. For more information contact Pam Thornton or the church office.

Week of Prayer for Christian Unity

The Week of Prayer for Christian Unity runs from 18<sup>th</sup> to 25<sup>th</sup> January. In this week we are invited us to pray and to connect with Christians in other traditions. Bill will be attending the Catholic Mass at 5.00pm on Saturday 17<sup>th</sup> January. You may want to join him. Some members of the Catholic community will be joining us on Sunday 18<sup>th</sup> at the 11.00am service.

Newcomers welcome tea

Are you relatively new to Cambourne Church? We would love to get to know you a little bit more and to welcome you. You're warmly invited to our drop in Welcome Tea on Sunday 25<sup>th</sup> January, 4.00-5.30pm, in the Church Annexe. Come along for a relaxed afternoon where you can enjoy tea and cake, meet other newcomers, and find out more about our community and life at Cambourne Church. Children are very welcome! There will be activities for them. We'd love to meet the whole family!

Please do let us know by Thursday 22<sup>nd</sup> January if you'd like to come by contacting the office ([office@cambournechurch.org.uk](mailto:office@cambournechurch.org.uk)) and let us know of any specific dietary requirements.

Burns Night Ceilidh

Saturday 24th January 7.30 for 7.45pm at Cambourne Church

Join us for an evening of lively dancing, delicious Scottish canapés and great fun! Do invite neighbours and friends. Licensed bar taking cash/card.

Tickets £16 (£12 for under 12s) via our website: [www.cambournechurch.org.uk/burnsnight](http://www.cambournechurch.org.uk/burnsnight) by 22nd January.

We need a team of about 15 people to help on the night to make this event happen. Can you help set up/set down, help in the kitchen, help with the bar? There will be a sign up sheet in church from this Sunday for offers of help. Thanks very much. For more info speak to Jacqui Huckle, Kerrion Miller or Julie Whitbread.

Compassion fundraising

A chance to have a bit of a clear-out, and pick up some bargains. There will be a sale of unwanted Christmas presents and other good-as-new goods after both services on the 18th January. If you go to the 9:30, you can see what others at the 9:30 have brought and get an advanced look at what any early birds at the 11 o'clock bring! All proceeds go to support Thomas, the Kenyan child sponsored by Cambourne church through Compassion.

**Notes & News Entry Deadline**

Noon on Wednesday, submitted to [office@cambournechurch.org.uk](mailto:office@cambournechurch.org.uk)

Entries may be edited to fit the space available.

## 3Cs

A chance for seniors to gather and chat informally over a cup of tea while playing board games.

1st and 3<sup>rd</sup> Mondays  
2.00 - 3.30pm  
The Annexe

Monday, 2.30-4pm  
Cambourne Church  
Annexe

26 January  
23 February  
23 March  
22 June  
27 July  
28 September  
26 October  
23 November



## Cherished Afternoon Tea and Fellowship

Are you retired? Unable to work due to ill health? Widowed? Spending much of your time alone?

If the answer is yes to any of these you are welcome to join us at Cherished, where you will be greeted with a warm and loving welcome, as well as a delicious tea

For more information contact the church office on 01954 710644  
[www.cambournechurch.org.uk](http://www.cambournechurch.org.uk)

## JUBILEE GARDEN VEG PLOT

Thank you to all who have helped so far with the set up of the Jubilee Garden veg plot.

Join us on third Saturdays from 10am as we continue this project



## CAMBOURNE HEALTH AND WELLBEING CLUB

A group for older adults

From 10.30am - 12 midday  
Cambourne Church Annexe

1st and 3rd Fridays of the month (termtime)

Sessions designed to promote independence, mobility and good health through strengthening, balance and chair based exercises.

Refreshments provided and time for conversation.  
Free group, no need to book, all equipment provided.

For more details please contact:

### Dates for Spring 2026

16<sup>th</sup> January  
6<sup>th</sup> February  
6<sup>th</sup> and 20<sup>th</sup> March



## The Harbour Bereavement Café

An informal, monthly drop-in for adults to meet together, share experiences and chat with those who are also walking the bereavement journey.

2nd Friday of the month

12.30-2.00pm

Includes light lunch and refreshments

The Annexe, Cambourne Church  
Jeavons Lane, CB23 6AF

Free to attend



### Church flowers

Are there any in our community who would like to be a part of a team to take this ministry on? For more information, or to offer help, please contact the church office.

### 221 divorce support

221 Divorce Support runs SELF-HELP groups for people struggling to cope with the practical and emotional challenges following the break-up of their marriage or long-term partnership. They have begun running monthly sessions in Cambourne Church Annexe on the first Tuesday of each month 7-9pm.

### Other notices

Don't forget that there are noticeboards in the church hall with information from our partner denominations and other local churches, as well as the Mission and Giving team, Parish Nurse and local community groups. Do have a look regularly to see what else is happening.

If you need to contact anyone mentioned in Notes & News and don't know their details, or need information about the links, please leave a message with the Church Office





Donating to Cambourne Church

You can donate using the QR code to the left, or on the website

[www.cambournechurch.org.uk/giving](http://www.cambournechurch.org.uk/giving)

If you'd like to set up a standing order to give regularly please contact the church office.

## Regular Activities at Cambourne Church

- Morning Prayer: Monday, Tuesday, Thursday - 9.15am
- 19: The Coffee House - Tuesday - Thursday 9am - 12 noon (termtime)

### Monday

- 3Cs: 2 - 3.30pm 1<sup>st</sup> and 3<sup>rd</sup> weeks (Annexe)
- Cherished: 2.30 - 4pm Monthly (Annexe) - Afternoon tea and fellowship

### Tuesday

- Maple Close (formerly Bullrush Lane) Homegroup: 7.45pm termtime

### Wednesday

- Baby & Toddler Group: 9.30 - 11am termtime (Church Hall)
- Gospel Choir: 7.30-9.15pm termtime (The Blue Space)

### Thursday

- Foodbank: 10am - 12 noon (The Blue Space)

### Friday

- Health & Wellbeing Group: 10.30am - 1<sup>st</sup> & 3<sup>rd</sup> Fridays termtime (Annexe) - contact [nurse@cambournechurch.org.uk](mailto:nurse@cambournechurch.org.uk)
- Mosquito Rd Homegroup: 10.30am - Alternate weeks
- The Harbour Bereavement Cafe: 12.30pm, 2<sup>nd</sup> Friday of the month
- Ladies night: 7.45pm - 2<sup>nd</sup> Friday of the month in termtime (Annexe)
- Space 2 Create: 7.45pm - 4<sup>th</sup> Friday of the month in termtime (Annexe)

### Saturday

- Church garden work: 10am-12pm - 3<sup>rd</sup> week of the month

For more information about any of these activities please contact the church office

WHAT'S ON

## Contacts

### Minister:

Revd Bill Miller

[bill.miller@cambournechurch.org.uk](mailto:bill.miller@cambournechurch.org.uk)

07753 883809

### Admininistrators:

Jacqui Huckle and Hannah Heasley

[office@cambournechurch.org.uk](mailto:office@cambournechurch.org.uk)

01954 710644

Church office open

Term time: Mon - Fri 10am - 12noon

School Holidays: Tue - Thur 10am - 12noon

Closed Bank Holidays